

M903TB LED Module
Back lit solution for 80-200mm depth signs



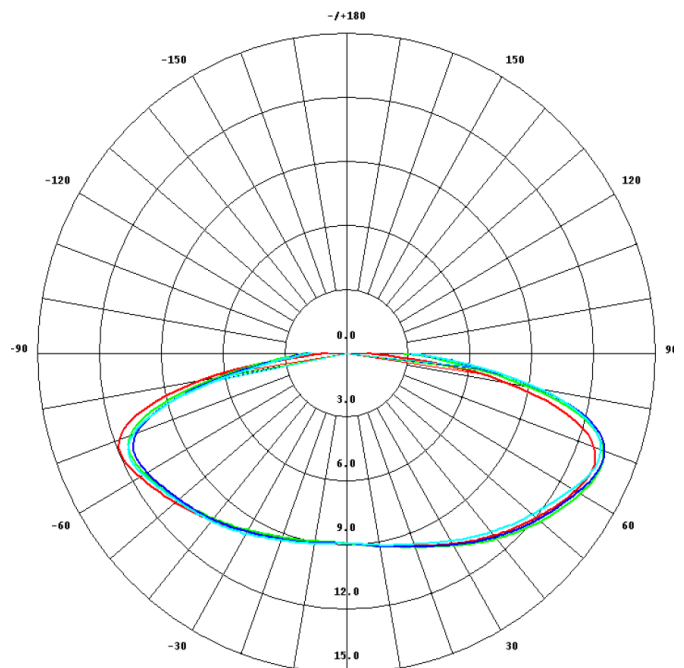
ADVANTAGES

- 5 years warranty*
- Long life & low attenuation 2835 SMD LED
- Superior luminous efficiency—81lm/W (white), 97lm/module
- 160° wide beam angle, use less modules for same illumination uniformity
- Constant current driving technology guarantees stable illumination performance
- IP65 over-moulded design suitable for outdoor sign applications
- Available in white, red, yellow, green and blue
- UL, CE, RoHS compliant

* 5 years or 22,000 hours, whichever comes first

* Working within operating temperature

LIGHT DISTRIBUTION



INSTALLATION

- Max. 50 modules per string
- Easy installation with 3M self-adhesive tape, screw fixed if needed
- Can cut every single module

ASTECH (a Division of the Albert Smith Group)

59 Taylor St Bulimba QLD 4171, Ph. 07 3395 9888 Fx. 07 3891 0713

Email: enquires@asgroup.com.au Web: www.albertsmithgroup.com.au

ABN. 42345973910

M903TB LED Module
Back lit solution for 80-200mm depth signs

PRODUCT OPTIONS

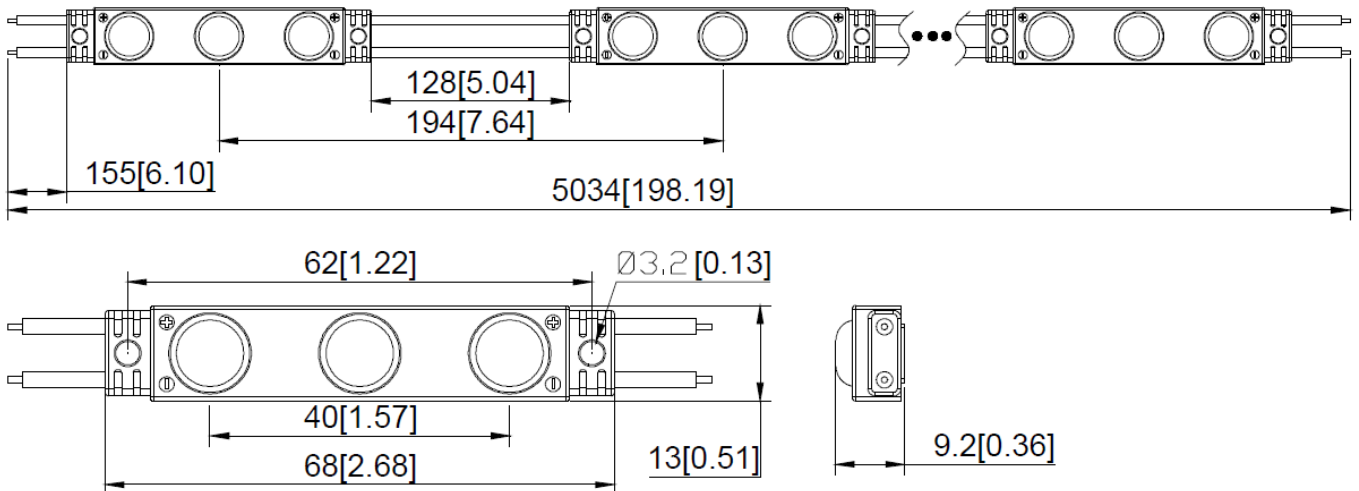
P/N	LED Colour	Colour Temperature (K) Wavelength (nm)	Luminous Flux (lm/module)	CRI	Luminous Efficiency (lm/W)	Working Voltage (V DC)	Working Current (mA/module)	Power (W/module)
M903TB	Warm white	3000	97	≥75	81	12	100	1.2
	Natural white	6000	97	≥75	81	12	100	1.2
	Cold white	9000	97	≥75	81	12	100	1.2
	Red	620 ~ 625	33	—	28	12	100	1.2
	Yellow	585 ~ 590	28	—	23	12	100	1.2
	Green	525 ~ 530	75	—	63	12	100	1.2
	Blue	465 ~ 470	16	—	13	12	100	1.2

OTHERS

P/N	Colour Options	Standard Cascading Qty (pcs)	Max Cascading Per String		Single Module Weight (g)	Operating Temperature (°C)	Storage Temperature (°C)	Ingression Protection Grading
			Single End	Double End				
M903TB	White, Red, Yellow, Green, Blue	25	25	50	10.2	-25 ~ +60	-25 ~ +70	IP65

PRODUCT PROFILE

Unit: mm [in]



ASTECH (a Division of the Albert Smith Group)

59 Taylor St Bulimba QLD 4171, Ph. 07 3395 9888 Fx. 07 3891 0713

Email: enquires@asgroup.com.au Web: www.albertsmithgroup.com.au

ABN. 42345973910