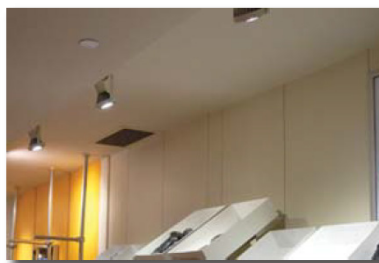


PAR Light

Features

- Patented “ Heat Sink”
- Customizable light color (optional)
- Customizable beam angle (optional)
- Unique lightweight housing design
- Electro-statically applied polyester powder coat finish



Optical Performance

- Color temperature: 3500K, 5000K
- Lighting angle: 25/45/60 degree
- Customizable light color

Electrical Specifications

- Power input: 120-277 VAC 50/60Hz
- Power factor: ≥80%
- THD <20% at full load
- 347 VAC (optional)

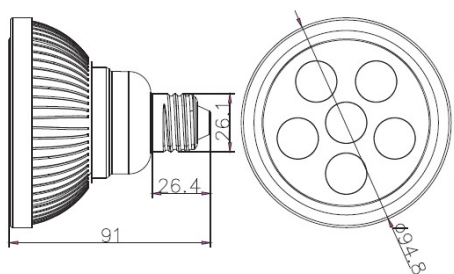
Test & Certifications

- ETL certified
- UL standard 1598 & 8750 and 1012
- CSA C22.2 No.107.1 and No.250.0
- RoHS compliant (optional)
- LM70, LM80

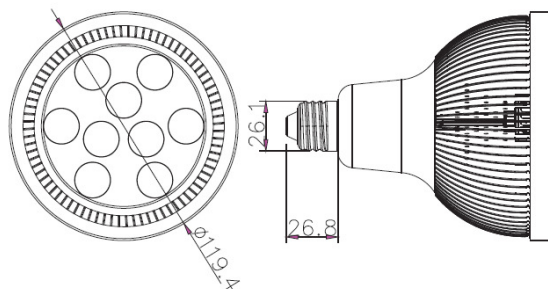
Performance Specifications

Model	Lighting Source LEDs	Operating at 3500K CCT, 25°C					Operating at 5000K CCT, 25°C				
		Beam Angle	Luminous Flux (lm)	CRI	Luminous Efficacy (lm/W)	System Watts	Beam Angle	Luminous Flux (lm)	CRI	Luminous Efficacy (lm/W)	System Watts
C21PR-3002 PAR30	6	25/45/60	525	84	70	7	25/45/60	562	84	75	7
C21PR-3802 PAR38	9	25/45/60	825	84	70	12	25/45/60	900	84	75	12

Physical Dimensions



C21PR-3002 PAR30



C21PR-3802 PAR38

ASTECH (a Division of the Albert Smith Group)

59 Taylor St Bulimba Qld 4171, Ph. 07 33959888 FX. 07 38910713

EMAIL: enquiries@asgroup.com.au WEB: www.albertsmithgroup.com.au

ABN. 42345973910